

# **XE-A303 Easy Programming Tool Installation Manual (Windows 7 Professional 32 bit version only)**

The following three steps are necessary to use Easy Programming Tool on Windows 7 Professional 32 bit version only.

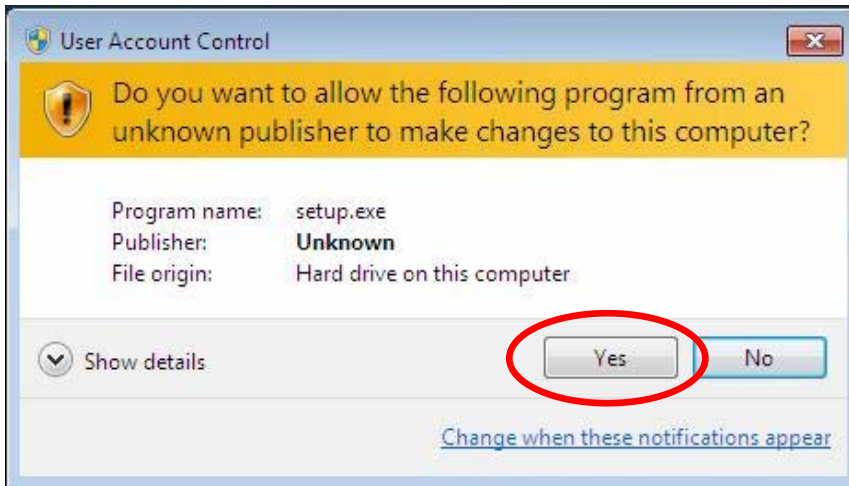
Step 1. Installation of the program

Step 2. Installation of the USB driver

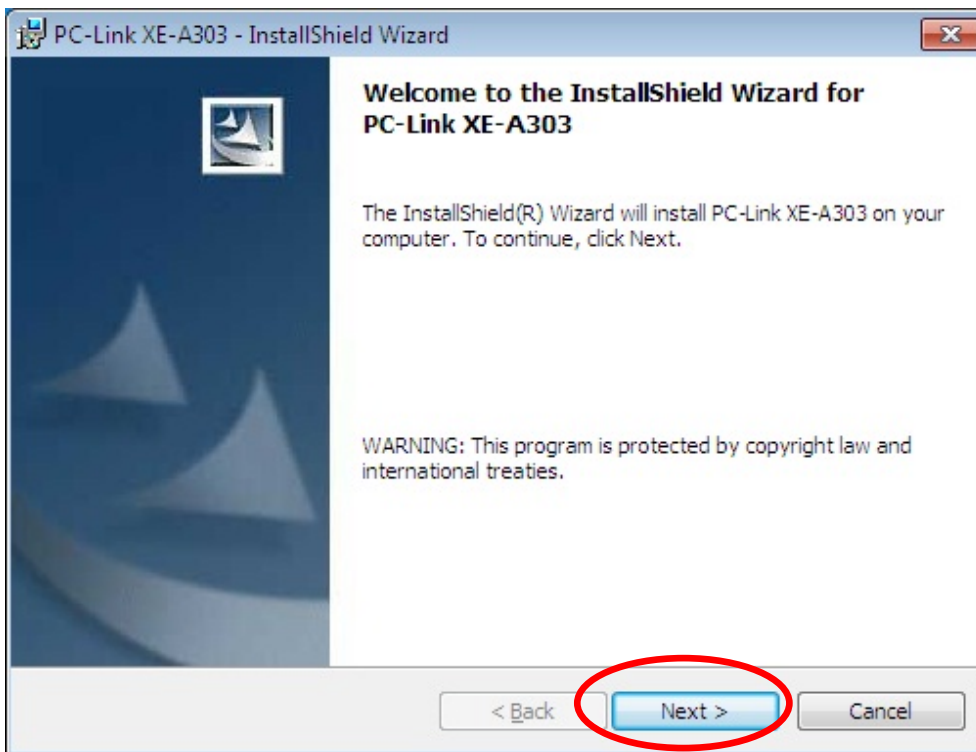
Step 3. Setting the property of the shortcut

## Installation of the program

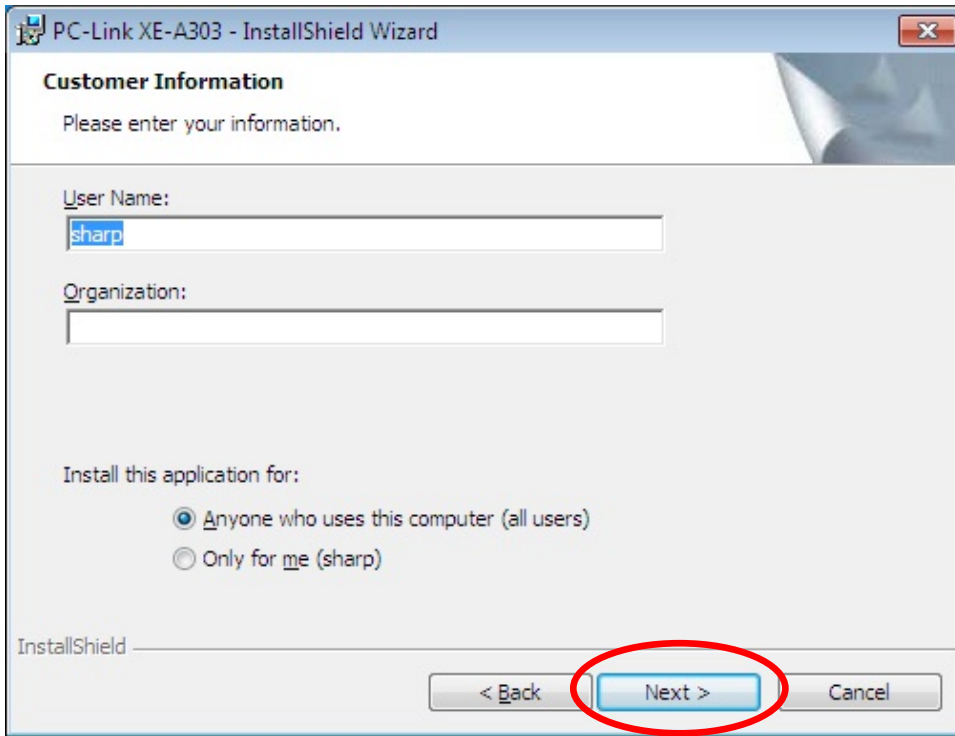
1. Be sure to log on to Windows as an administrator.
2. Double-click "setup.exe".
3. Click on [Yes] in the below User Account Control window that appears.



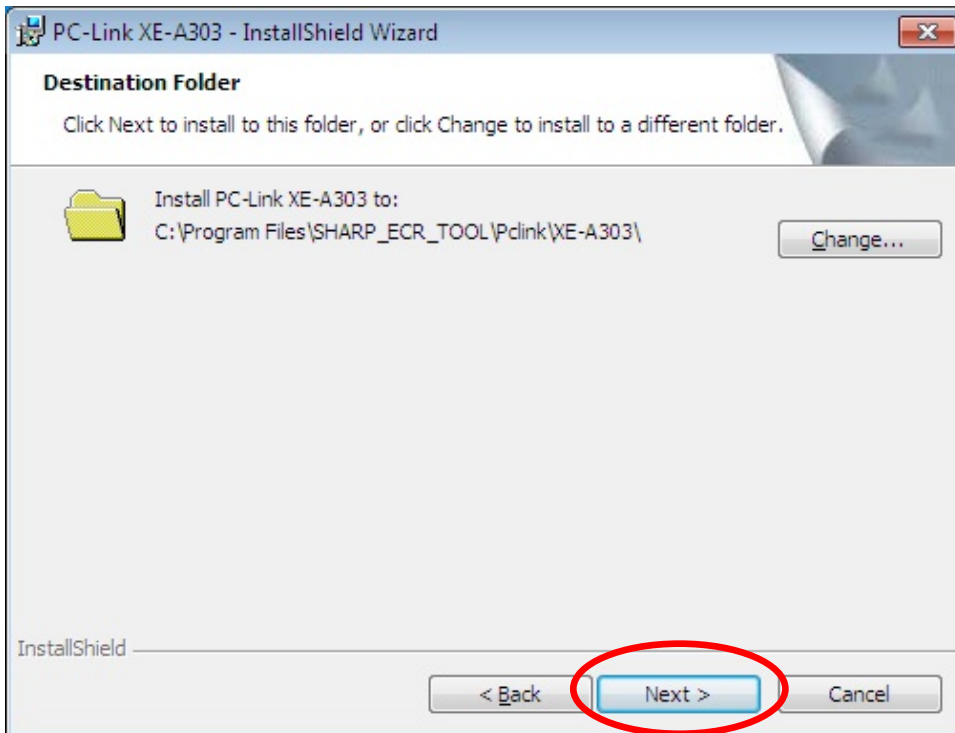
4. Read the WARNING, and click [Next].



5. Input the Customer Information, and click [Next].

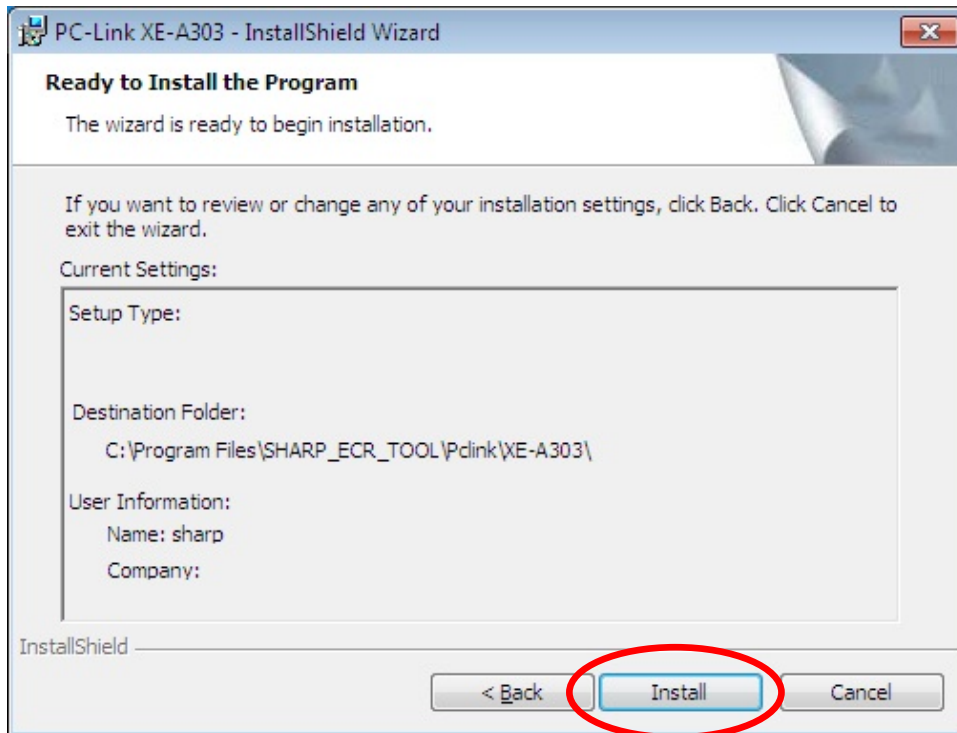


6. Make sure your Destination Folder is all right, and click [Next].

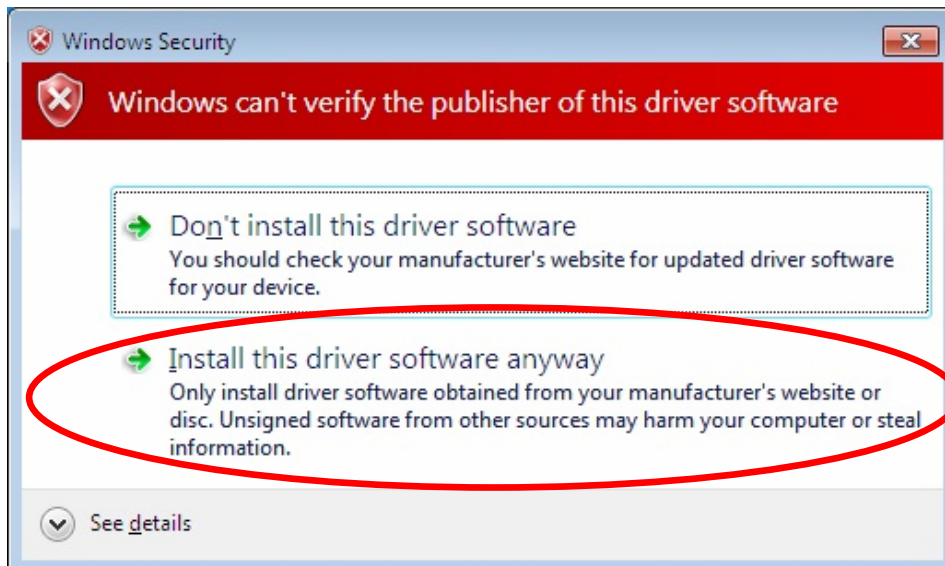


7. Make sure the information on the screen is all right, and click [Install].

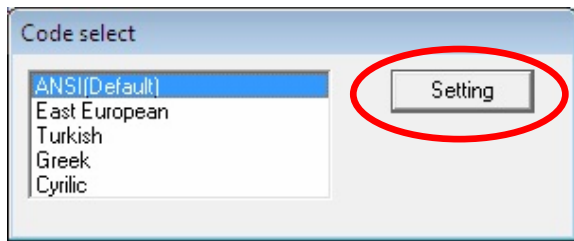
The installation starts.



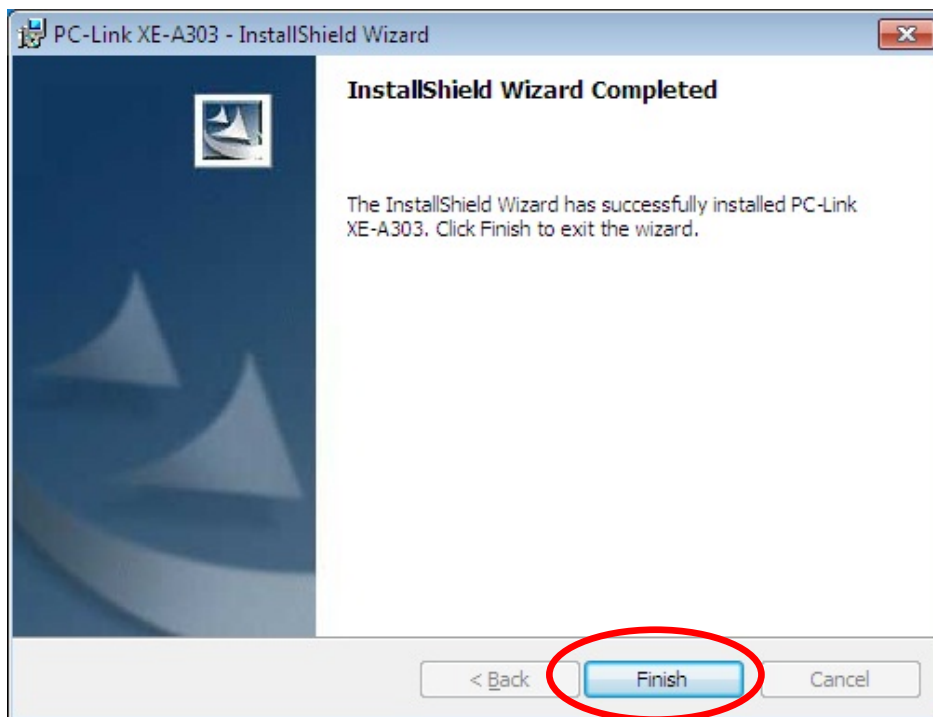
8. A Windows Security window appears. Click on "Install this driver software anyway".



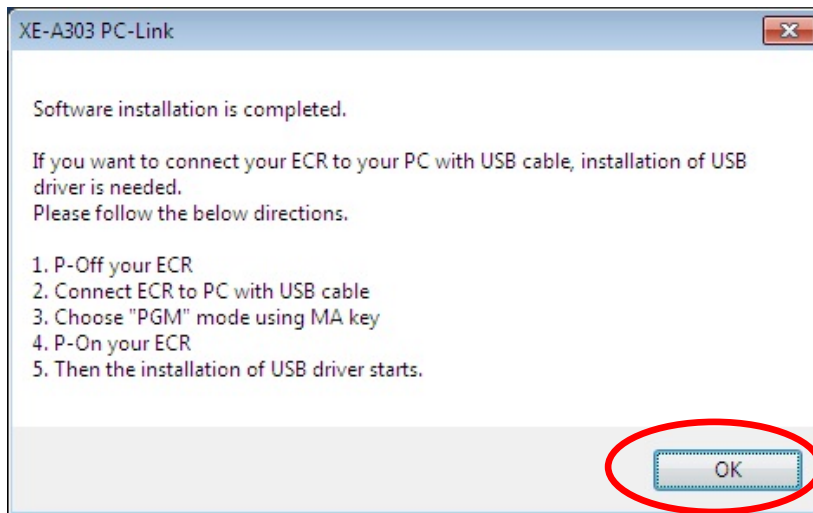
9. Select language and click [Setting].



10. When the program is installed successfully, the screen below appears. Click [Finish].



11. The message box below appears on the last screen of the Wizard. This message box is for those who want to connect the ECR to your computer with a USB cable. Click [OK].

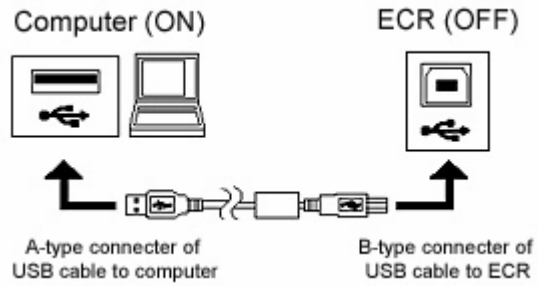


12. The shortcut icon appears on the desktop.

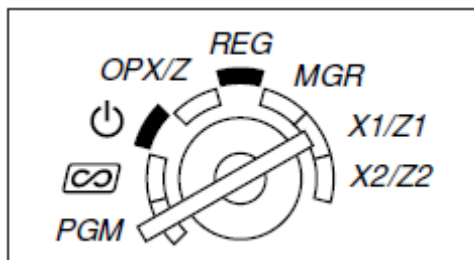


## Installation of the USB driver

1. Make sure the ECR (Electronic Cash Register) is unplugged.
2. Connect the ECR to your computer with a USB cable.



3. Insert the manager key of the ECR, and set the mode switch to [PGM].

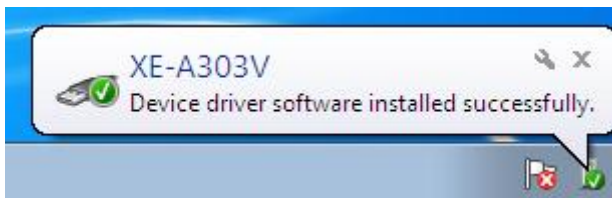


4. Plug in the ECR.

5. "Installing device driver software" appears in the lower right-hand corner of the window.



6. USB driver updating is completed after "XE-A303V Device driver software installed successfully." appears in the lower right-hand corner.

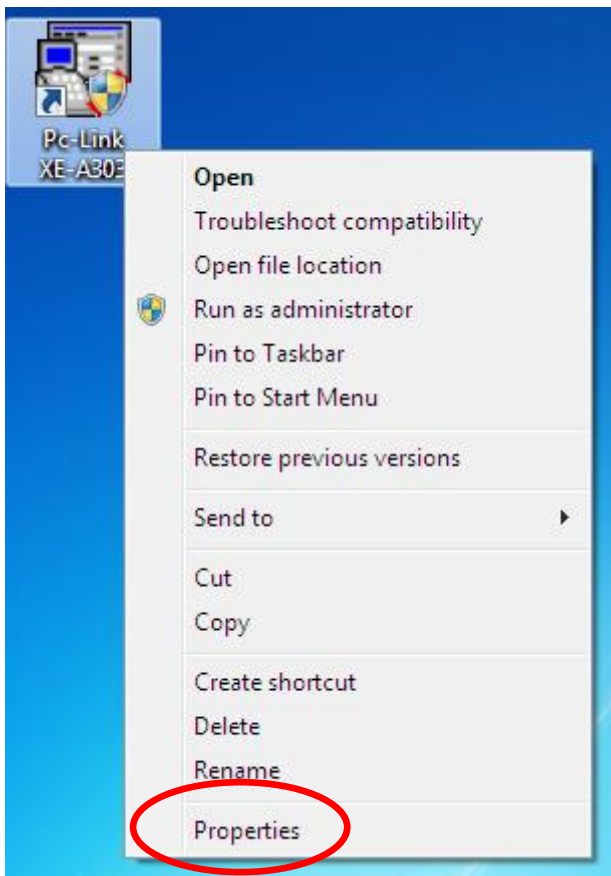


## Setting the property of the shortcut

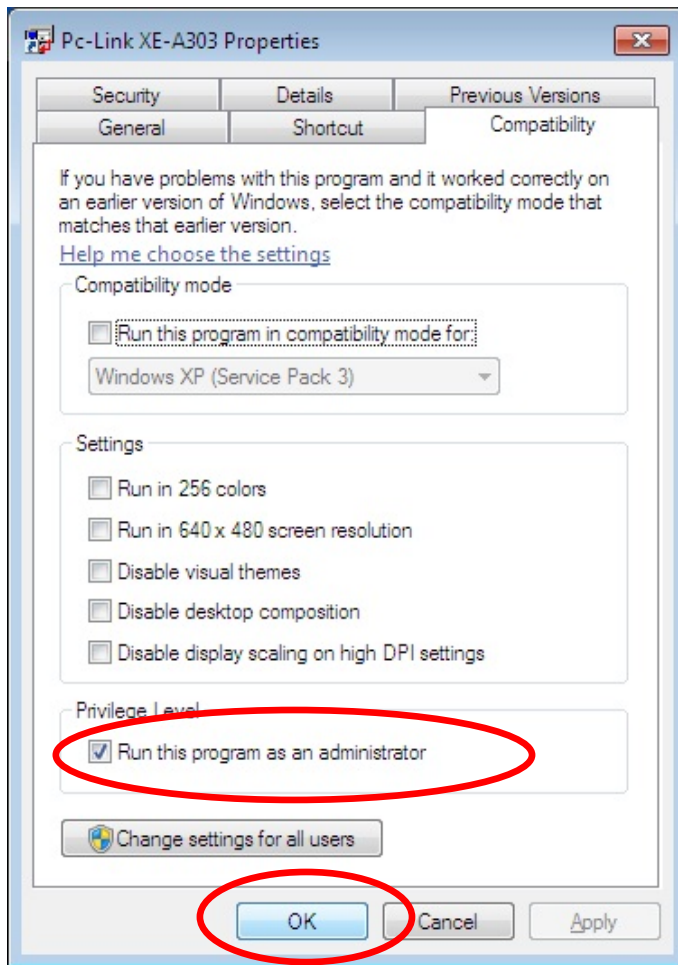
1. Move the mouse cursor over the shortcut icon on your desktop and right-click on it.



2. Click on "Properties" at the very bottom of the pop-up menu that appears.

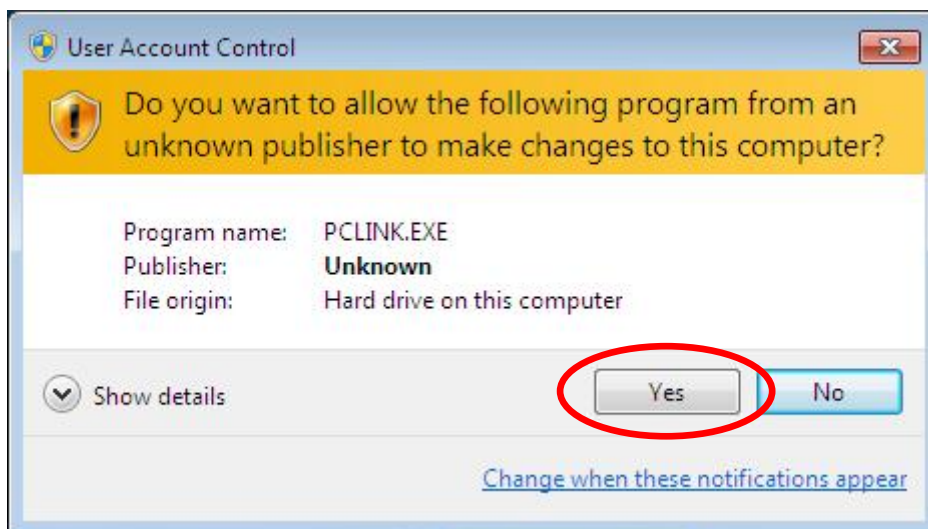


3. The Properties window appears, therefore open the Compatibility tab, place a checkmark on the "Run this program as an administrator" checkbox under Privilege Level, and click on [OK].



4. Startup the Easy Programming Tool by either clicking on the shortcut icon on the desktop or selecting it from the Start menu.

5. Click on [Yes] in the User Account Control window that appears.

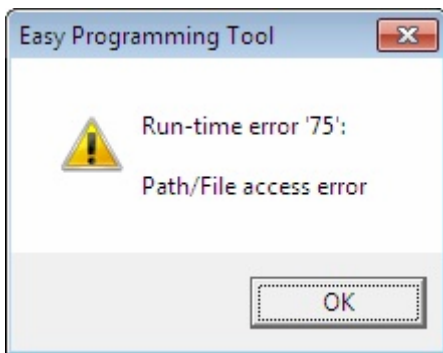


## Troubleshooting

If you have the following problems or error messages, please check the Solutions.

<Error message 1> Run-time error '75'

When you startup the Easy Programming Tool and click “START” in the top menu window, the following error message windows appears.



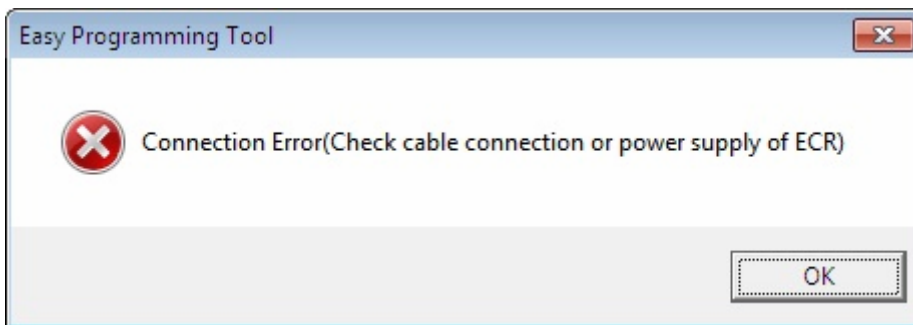
<Solutions>

Have you placed the checkmark on “Privilege Level” of the “Compatibility” tab of the “Properties”?

Refer to the “Setting the property of the shortcut” on pages 9 and 10 of this manual.

<Error message 2> Connection Error

When you startup the Easy Programming Tool and click “START” in the top menu window, the following error message windows appears.



<Solutions>

Please check the followings:

- Is the cable connected?
- Is the ECR powered-on?

Is the USB driver installed successfully?

(Please refer the next item for the reinstalling of the USB driver.)

#### <Problem 1> USB Driver not installed

If you do any of the following operations during the installation of the USB driver, the driver may not be installed successfully.

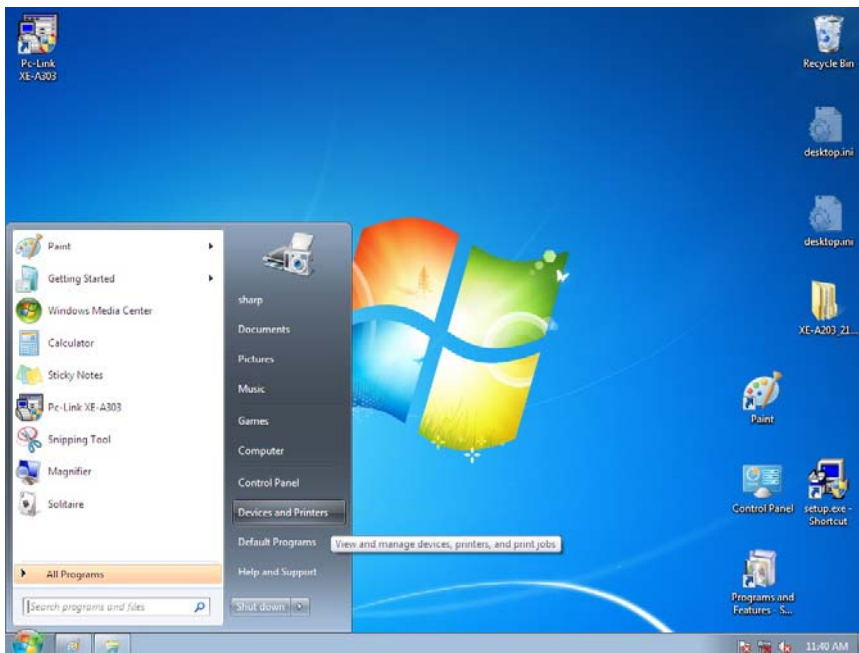
- Connect a USB cable before the Easy Programming Tool installation is performed.
- “Select “Don’t install this driver software” in the “Windows Security” window during the installation.
- Cancel the Installation before completed.

#### <Solutions>

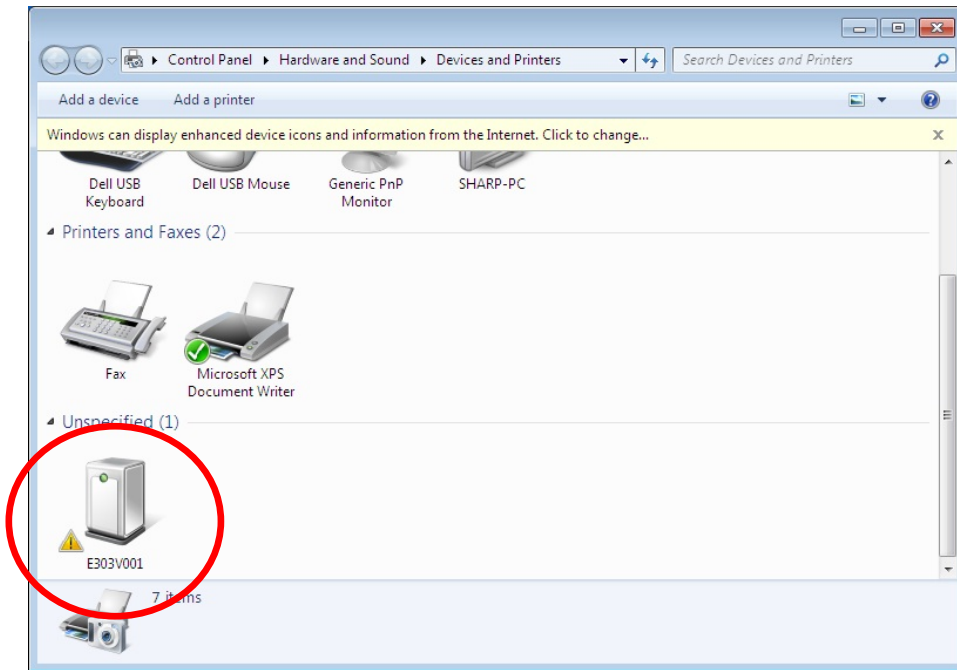
Reinstall the driver by the following procedures:

#### Checking the condition of the driver

1. Connect the ECR to your computer with a USB cable.
2. Power on the ECR.
3. Restart your computer.
4. Click “Devices and Printers” in the Start Menu.



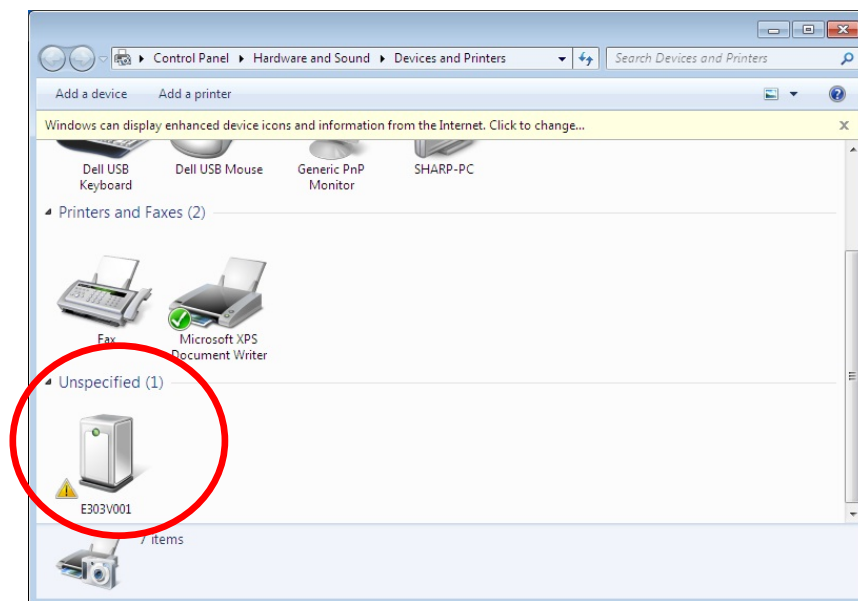
5. When the caution mark (⚠) is placed on the icon of “E303V001”, the USB driver is not installed correctly.



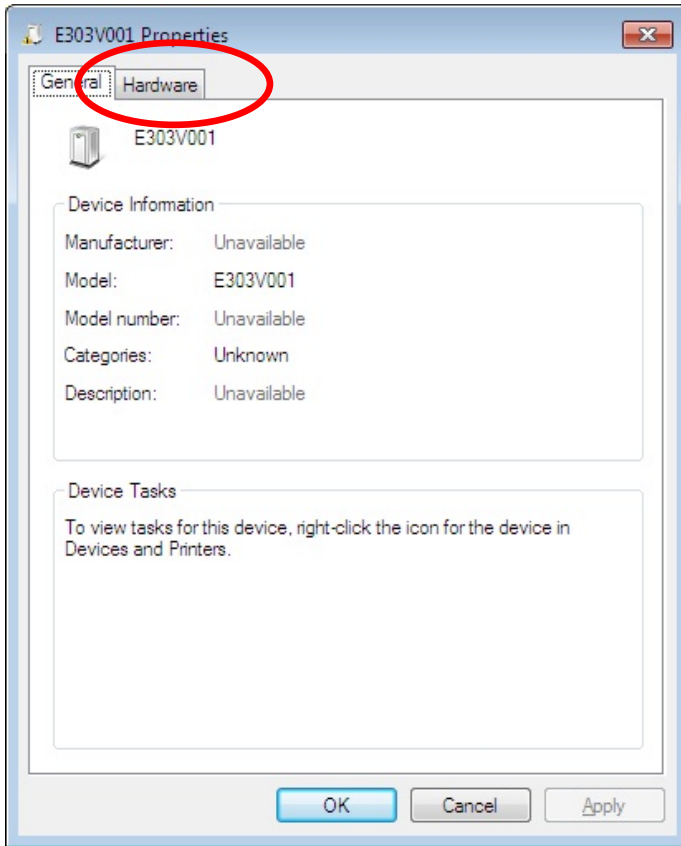
If the USB driver is not installed correctly, you must uninstall the driver first, and then uninstall the Easy Programming Tool, and reinstall the Easy Programming tool again.

### Uninstallation of the USB driver

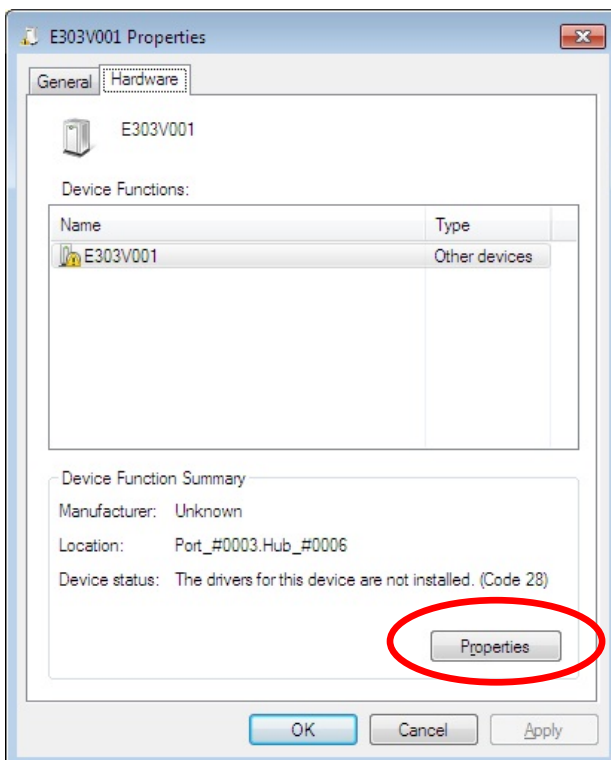
1. Click “Devices and Printers” in the Start Menu.
2. Double-click “E303V001”



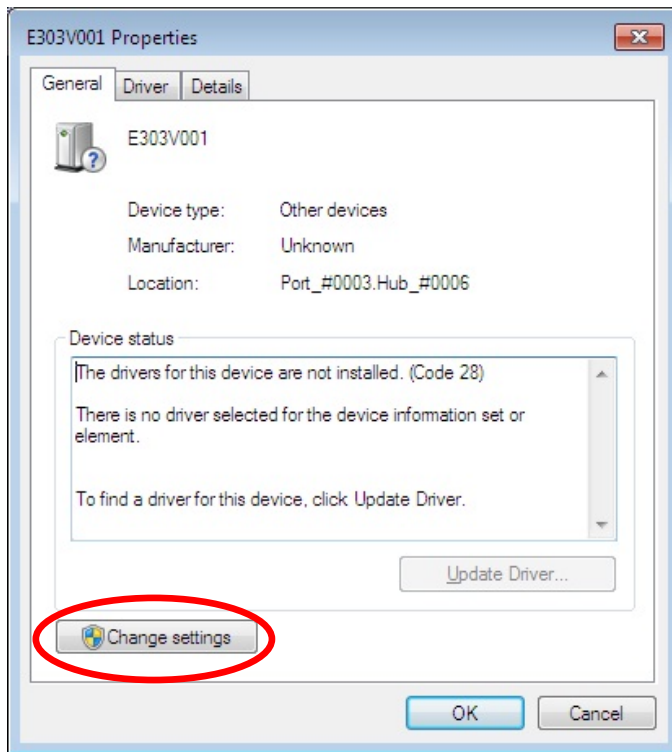
3. Click “Hardware” tab of the “E303V001 Properties” window.



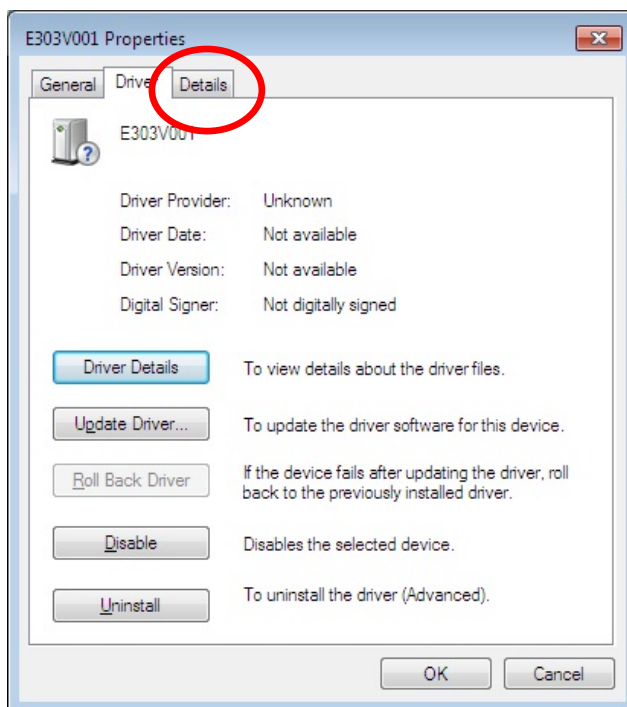
4. Click [Properties].



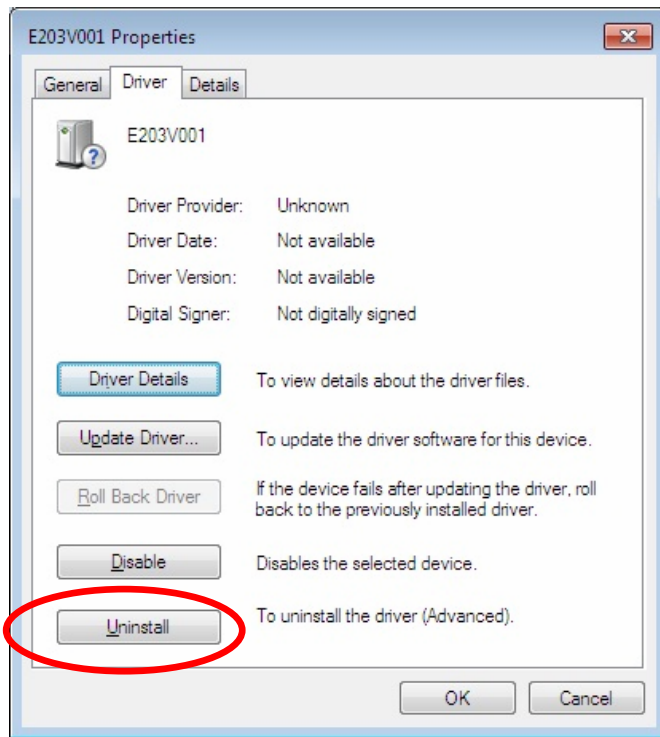
5. Click [Change settings].



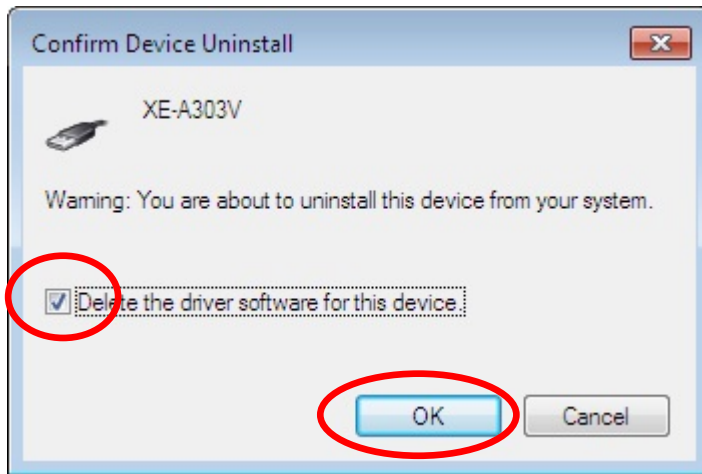
6. Click "Driver" tab.



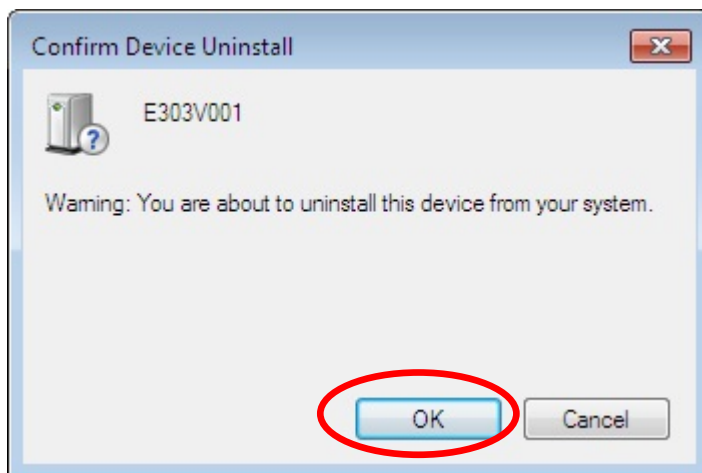
7. Click [Uninstall].



8. Place a checkmark on “Delete the driver software for this device” of the “Confirm Device Uninstall” window, and click “OK”.

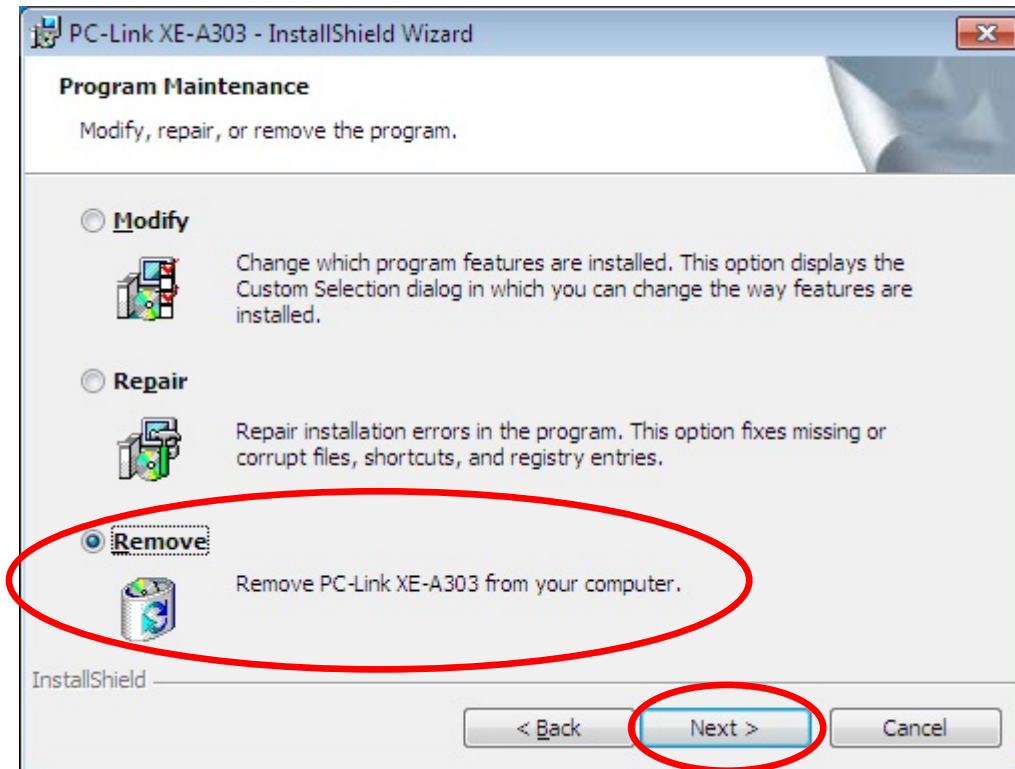


If this window appears instead of the above window, only click [OK].



### Uninstallation of the Easy Programming Tool

10. Double-click “setup.exe” of the XE-A303 Easy Programming Tool and click [Next] in the Wizard window.
11. Select “Remove” in the “Program Maintenance” window and click [Next], and click [Remove] in the next window. Uninstall will begin.



### Reinstallation of the Easy Programming Tool

12. After finishing uninstall of the Easy Programming Tool, install the software again from the beginning.  
(Refer to this installation manual)