

New Design, Greater Function— Smart MFDs with Colour Network Scanning



Highly Productive Operation

- Speedy output of max. 28 ppm and fast first copy time of 4.6 sec.
- Finishing options include bi-folding saddle stitch finisher and inner finisher
- Built-in stackless duplex module and 100-sheet high-speed Reverse Single Pass Feeder
- Standard hard disk and electronic sorting
- Standard 1,100-sheet paper capacity, expandable to max. 5,600 sheets
- Standard hard disk and electronic sorting
- Standard 1,100-sheet paper capacity, expandable to max. 5,600 sheets
- Network tandem function doubles output speed by linking two MFDs
- Job Build function for large-volume documents

Multi-Layered Security Solutions

- Optional Data Security Kit encrypts and erases data retained inside the MFD
- Supports the IEEE 802.1X standard for port-based network access control
- Function-specific user authentication
- External Active Directory server allows user authentication management of multiple MFDs and of a greater number of users
- IP/MAC address filtering restricts unauthorised access
- SSL and IPsec enable data encryption for secure network communications
- Encrypted PDF with password protection for secure scanning
- Document Control function* prevents unauthorised copying, scanning, faxing, and filing of confidential documents

* Requires optional Data Security Kit

Superb Image Quality

- True 1,200 x 1,200-dpi high-quality printing without sacrificing speed
- High-resolution imaging with 256-level greyscale; clearly reproduces fine lines, small text, and delicate halftones
- Seven exposure modes including Auto and Text/Photo provide optimum copy quality

Sharp's One-of-a-Kind Features

- Sharp OSA 3.2 (Open Systems Architecture)* allows integration with network applications and makes them accessible from the LCD control panel
- 8.5-inch, touch-screen colour LCD provides thumbnails/previews of Document Filing and fax reception data and previews of copy/send/save jobs
- A choice of six LCD screen colours
- Control panel can be remotely displayed and operated on a PC
- Retractable QWERTY keyboard (option) allows easy text entry

* Requires optional MX-AMX2 and/or MX-AMX3

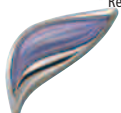
All-in-One Performance

- Supports Gigabit Ethernet and the latest network protocols and operating systems
- Standard PCL5e/PCL6 and optional PS3 emulation
- Full-colour network scanning with scan to e-mail/FTP server/desktop/network folder/USB, and support for JPEG, TIFF, XPS, PDF, and high-compression PDF* formats
- USB port at the front of the MFD allows easy scan to/print from USB memory
- Sharpdesk for integrated, intuitive document management on a PC
- Document Filing function to instantly reuse job data stored on the HDD
- Optional Super G3 fax and Internet fax that supports direct SMTP
- LDAP support for easy browsing of e-mail addresses and fax numbers
- Supports the XPS format (standard for scanning; optional for printing)

* Requires optional MX-EBX3

Environmentally Advanced Design

- Lead- and chromium-free design (RoHS compliant)
- Certified for Energy Star and conforms to standards set for the Nordic Swan and Blue Angel environmental labels
- Energy-saving design (less than 1W in standby for fax reception)



COPY

NETWORK PRINT

COLOUR NETWORK SCAN

SHARPDESK

FAX OPTION

MX-M283N Digital Multifunctional System



SPECIFICATIONS

General

Type	Desktop
Engine speed	Max. 28 cpm/ppm (A4, long-edge feeding)
Paper size	Max. A3W, min. A5R
Paper capacity (80 g/m ²)	Standard: 1,100 sheets (two 500-sheet trays and 100-sheet multi-bypass tray) Maximum: 5,600 sheets
Paper weight	Tray: 60 g/m ² to 209 g/m ² Large-capacity tray: 60 g/m ² to 105 g/m ² Multi-bypass tray: 56 g/m ² to 209 g/m ²
Warm-up time	Less than 20 sec.
Memory	Copier memory: 640MB Printer memory: Standard 1GB, max. 2GB 80GB HDD*1
Power requirements	230-240V AC, 50/60 Hz
Power consumption (max.)	1.84 kW
Dimensions (W x D x H)	645 x 695 x 935 mm
Weight (approx.)	95 kg
Features	Card shot, edge/centre erase, job build, document filing, user authentication (1,000 accounts), toner save mode, pre-heat/auto power shut-off modes

Copier

Original paper size	Max. A3
First copy time*2	4.6 sec.
Continuous copy	Max. 999 copies
Resolution	Scan: 600 x 600 dpi, 600 x 400 dpi, 600 x 300 dpi Print: 1,200 x 1,200 dpi, 600 x 600 dpi Scan: 256 levels Print: 2 levels
Gradation	
Zoom range	25 to 400% (25 to 200% using DSPF/RSPF) in 1% increments
Preset copy ratios	Metric: 10 ratios (5R/5E), inch: 8 ratios (4R/4E)
Features*3	Auto paper selection (mixed/random size feeding), auto magnification selection, paper type selection, auto tray switching, rotation copy, electronic sorting, network tandem copy, book copy, margin shift, dual page copy, multi-shot (4-in-1, 2-in-1), cover/transparency/tab page insertion, 2-sided copy orientation change, XY zoom, B/W reverse, mirror image, duplex copy, job reservation, job programme, image repeat, irregular original/paper size input, stamps (date, page number, text, stamp), multi-page enlargement, tab copy, centering, proof copy, watermarks, sharpness, preview

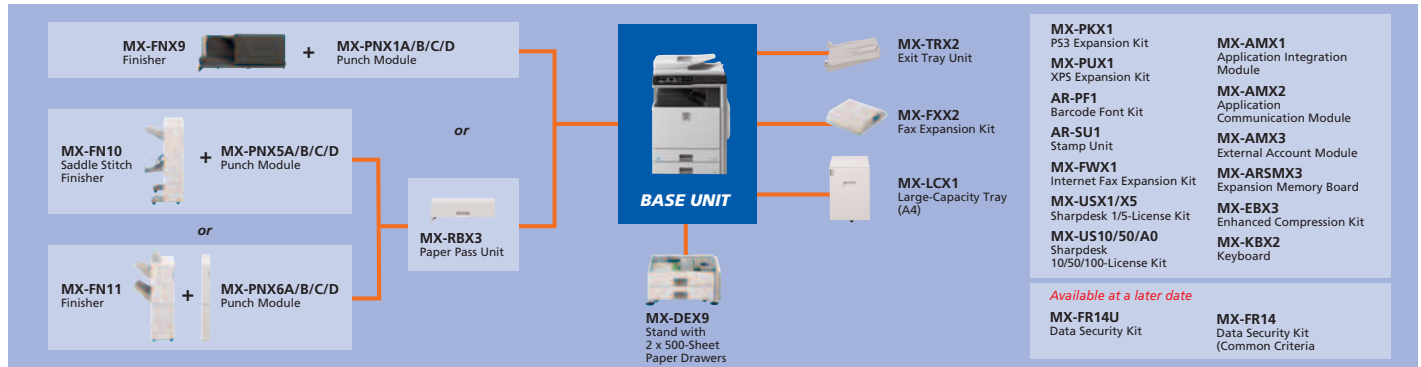
Network Colour Scanner

Scan method	Push scan (via control panel), pull scan (TWAIN-compliant application)
Resolution	Push scan: 100, 200, 300, 400, 600 dpi Pull scan: 75, 100, 150, 200, 300, 400, 600 dpi 50 to 9,600 dpi via user setting
File formats	TIFF, PDF, encrypted PDF, JPEG (colour only), XPS*4, high-compression PDF*5
Scanner utility	Sharpdesk
Scan destinations	Scan to e-mail, desktop, FTP server, network folder (SMB), USB memory
Features	Internet fax*6 (supports direct SMTP), PC-Internet fax transmission*6, mixed size original scanning, LDAP support, 1,000 one-touch dials, 500 group dials, direct entry (address, subject, message), 48 job programmes, broadcasting, long original scanning (max. 1,000 mm)*7

Document Filing

Document filing capacity	Main and custom folders: 38GB, 20,000 pages*8 or 3,000 files Quick file folder: 12GB, 10,000 pages*8 or 1,000 files
Stored jobs*3	Copy, print, scan, fax transmission
Storage folders	Quick file folder, main folder, custom folder (max. 1,000 folders)
Confidential storage	Password protection

SYSTEM CONFIGURATION



Certain options may not be available in some areas.

Network Printer

Resolution	1,200 x 1,200 dpi, 600 x 600 dpi
Interface	USB 2.0 10Base-T/100Base-TX/1000Base-T
Supported OS*9	Windows NT® 4.0 SP5 or later, Windows Server® 2003/2008, Windows® 98/Me/2000/XP, Windows Vista® Mac OS 9.0 to 9.2.2, Mac OS X 10.2.8, 10.3.9, 10.4.11, 10.5 to 10.5.5
Network protocols*9	TCP/IP (IPv4, IPv6), IPX/SPX (NetWare), NetBEUI, EtherTalk (AppleTalk)
Printing protocols	LPR, Raw TCP (port 9100), POP3 (e-mail printing), HTTP, Novell Printserver application with NDS and Bindery, FTP for downloading print files, EtherTalk printing, IPP
PDL (emulation)	Standard: PCL 6/5e emulation Option*10: PS3 emulation, XPS
Available fonts	80 fonts for PCL, 136 fonts for PS3 emulation
Features*3 *11	Network tandem print, RIP Once/Print Many, job retention (print hold, proof print, confidential print), direct PDF/TIFF/JPEG/XPS printing, carbon copy print, duplex print, font/form download, offset output, printer administration utility and status monitor, pamphlet style, IP/MAC address filtering, port/protocol management, binding edge, N-up (2/4/6/8/9/16), paper/output tray selection, cover insertion, transparency interleave, fit to page, watermarks, form overlay, auto configuration, barcode font compatibility, tab print, secure network communications (SSL and IPsec [LPD])

Facsimile (optional MX-FXX2 required)

Compression method	MH/MR/MMR/JBIG
Communication protocol	Super G3/G3
Transmission time	Less than 3 seconds*12
Modem speed	33,600 bps to 2,400 bps with automatic fallback
Transmission resolution	From Standard (203.2 x 97.8 dpi) to Super Fine (406.4 x 391 dpi)
Recording width	A3 to A5
Memory	8MB flash memory
Grey scale levels	Equivalent to 256 levels
Features	Duplex transmission/reception, quick on-line transmission, error correction mode, 1,000 one-touch dials, 500 group dials, LDAP support, 48 job programmes, broadcasting number registration, F-Code compatibility (confidential, relay broadcast), polling, memory transmission/reception, auto reduction (transmission/reception), rotation transmission/reception, print actual size, 2-in-1 transmission, long original transmission (max. 1,000 mm), PC-Fax transmission, timer transmission, activity report, anti-junk fax, dual page scan, mixed size original scanning, inbound routing to e-mail/FTP server/network folder (SMB)/PC desktop/group

- * 1 : HDD capacity depends on procurement and sourcing status.
- * 2 : Long-edge feeding of A4 sheets. May take longer when taking a copy for the first time immediately after turning the machine on.
- * 3 : Some features require option(s).
- * 4 : To view XPS files on PCs not running Windows Vista, you must have the XPS Viewer application installed.
- * 5 : Optional MX-EBX3 required. *6: Optional MX-FWX1 required.
- * 7 : B/W documents only, scanned at under 400-dpi resolution. Max. 800 mm for Internet faxing or when scanning at 600 x 600-dpi resolution.
- * 8 : Measured using Sharp's standard chart (A4 with 6% coverage, B/W). The Quick File Folder shares the HDD with the Job Build function; up to 12GB of data storage is available when using both functions. The storage capacity will be less for colour pages.
- * 9 : Optional MX-PXX1 required for Mac OS and EtherTalk.
- * 10 : PS requires optional MX-PXX1. XPS requires optional MX-PUX1 and MX-ARSMX3 (1GB).
- * 11 : Some features are not available according to the printer driver used.
- * 12 : Based on Sharp's standard chart with approx. 700 characters (A4, long-edge feeding) at standard resolution in Super G3 mode, 33,600 bps, JBIG compression.

- Design and specifications are subject to change without prior notice.
- Colour variations to products may occur due to printing.
- Some features require Optional items. Please consult with an authorised Sharp Reseller for details.
- All information and technical details are correct as at machine release date.
- Windows, Windows Server, and Windows Vista are registered trademarks of Microsoft Corporation in the United States and/or other countries. All other brand names and product names may be trademarks or registered trademarks of their respective owners.
- The ENERGY STAR logo is a certification mark and may only be used to certify products that have been determined to meet the ENERGY STAR programme requirements. ENERGY STAR is a US registered mark. The ENERGY STAR guidelines apply to products only in the US, the EU, Japan, Canada, Australia, New Zealand, and Taiwan.

SHARP

SHARP CORPORATION OF AUSTRALIA PTY LTD
 ABN 40 003 039 405
 1 Huntingwood Drive, Huntingwood NSW 2148
 P.O. Box 6827, Blacktown, NSW 2148
 Tel: (02) 9830 4600 Fax: (02) 9672 1208
 www.sharp.net.au